

University of Leeds academic staff promotions

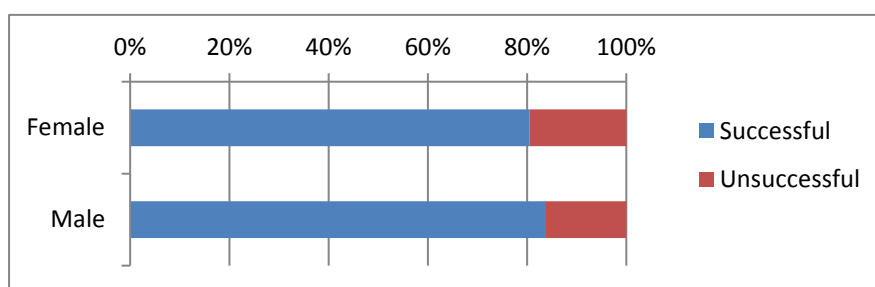
Figures 1.1 – 1.4 provides information on academic staff promotions up to and including grade 9 by protected characteristic over the period 1st August 2010 – 31st July 2011. A total of 97 applications for academic promotions up to grade 9 were made, of which 80 (78%) were successful.

Figure 2. 1 provides information on academic staff promotions for grade 10

Please note the data for staff applying for promotions to grade 10 have been presented separately, this is because of the differential promotions procedures for this grade.

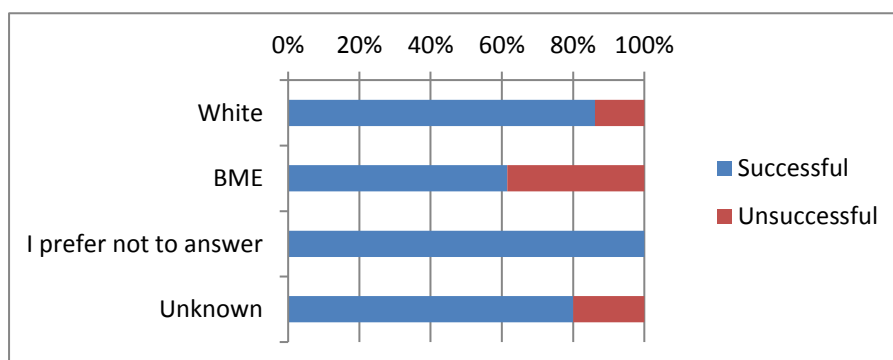
Academic promotions up to grade 9

Figure 1.1 gender



Gender	Successful	Unsuccessful	Grand Total
Female	29	7	36
Male	51	10	61
Grand Total	80	17	97

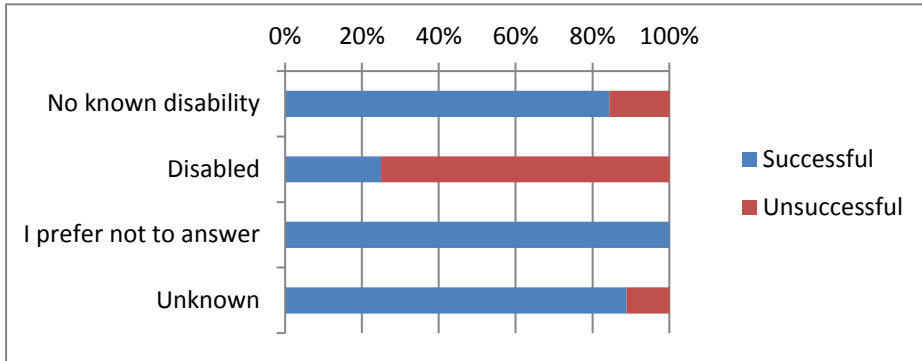
Figure 1.2 ethnicity



Ethnicity	Successful	Unsuccessful	Grand Total
White	62	10	72

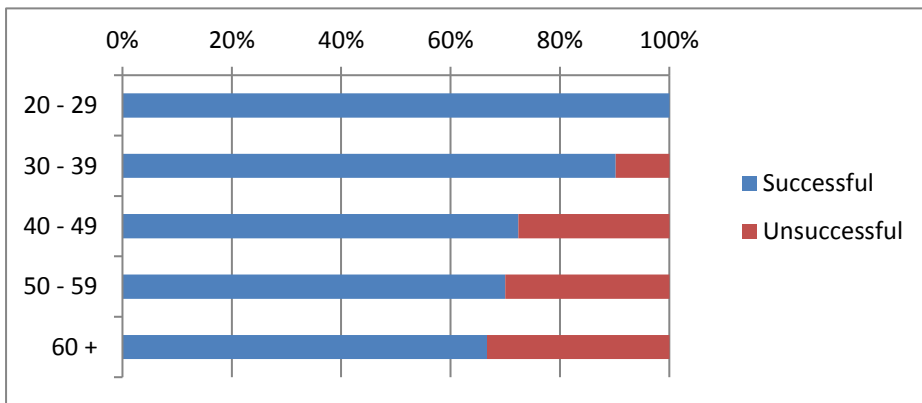
BME	8	5	13
I prefer not to answer	2	0	2
Unknown	8	2	10
Grand Total	80	17	97

Figure 1.3 disability



Disability	Successful	Unsuccessful	Grand Total
No known disability	70	13	83
Disabled	1	3	4
I prefer not to answer	1	0	1
Unknown	8	1	9
Grand Total	80	17	97

Figure 1.4 Age



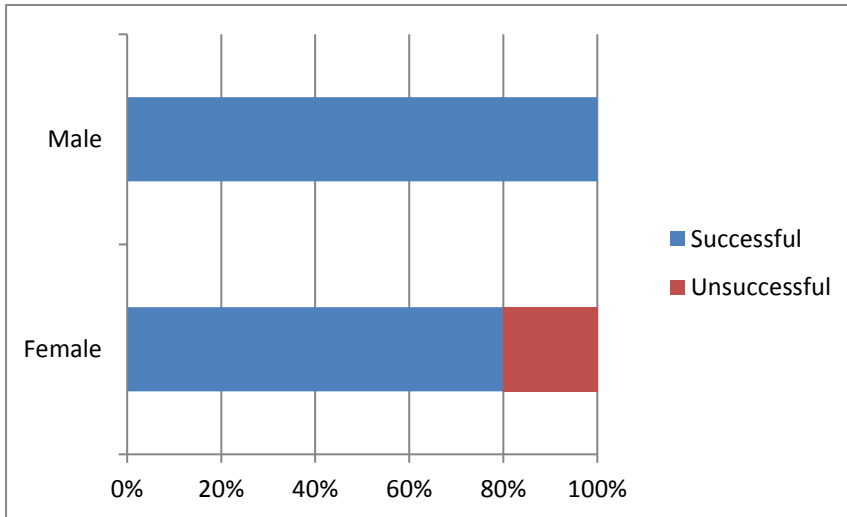
Age	Successful	Unsuccessful	Grand Total
20 - 29	4	0	4
30 - 39	46	5	51
40 - 49	21	8	29
50 - 59	7	3	10
60 +	2	1	3
Grand Total	80	17	97

Sexual orientation: please note: Figures are too small to present this data.

Religion: please note: Figures are too small to present this data.

Academic promotions - grade 10

Figure 2.1 Gender



Gender	Successful	Unsuccessful	Grand Total
Female	4	1	5
Male	16	0	16
Grand Total	20	1	21

Note – figures are too small to present data by other protected characteristics.